



Head Start Annual Report 2018-2019

710 N. Chicago Ave Kankakee, Illinois 60901
Phone (815) 802-4951 Fax (815) 936-3310 Email Jessica-Beland@ksd111.org

Director:

Jennifer Hering

Assistant Director Finance & Program Support:

Kary Phelps

Assistant Director Curriculum & Instruction:

Sherry Spencer

Assistant Director Health and Family Engagement:

Kennilyn Hickory

Each year Head Start programs are required to present an annual report to the public containing financial information as well as positive outcomes and school readiness goals our families and students have achieved. We are excited to highlight some of the awesome work our team has been doing over this last year, in this year's Annual report to the public.

Kankakee School District 111 Head Start Program aims to provide high-quality holistic programming for all children, prioritizing services for vulnerable or at-risk children. Kankakee School District 111's (KSD) goal is to have a birth to graduation continuum of support enabling all children to be successful students and responsible citizens. Head Start programming complements Preschool for All (PFA), Preschool for All Expansion (PFAE) and Prevention Initiative (PI) programs yielding a zero-third grade learning system, optimizing student's outcomes and decreasing disparities.

Head Start classrooms are currently located throughout the county in Kankakee at Proegler School, the YWCA and Kankakee Community College (KCC), in Manteno at Manteno Elementary, in Bourbonnais at Alan Shepard Elementary, and in Herscher at Herscher Intermediate School. These locations service 65% of the total eligible children in Kankakee County based on age and household income.

Over the last two years our program has worked to develop and implement three School Improvement Goals that support the mission and vision of Kankakee School District and exemplify our desire to continue to be a leader in providing comprehensive high-quality learning opportunities. Our three School Improvement Goals are:

SCHOOL GOAL 1: The preschool program will further develop and implement multi-tiered systems of support for all students in order to promote cradle to career readiness.

SCHOOL GOAL 2: Preschool Program will build a positive public perception by developing strong relationships with all stakeholders, ensuring families and staff have the skills and knowledge to provide a stable home and school environment that supports social-emotional health and family stability.

SCHOOL GOAL 3: Preschool Management team will design uniform systems for Head Start, PFA, PFAE and PI, while adhering to grant requirements to provide clear communication of expectations as well as roles and responsibilities to support, encourage and retain effective staff.

An overview of activities that have been completed to achieve our goals this school year include: the adaptation of the Pyramid Model to address challenging behavior, curriculum and assessment pilot programs to determine which curriculum will be used to provide hands on, open-ended, engaging learning opportunities for all children, the implementation of Sunshine Circles as a behavior intervention and the creation of the Student Advisory Council.

Thank you for this amazing opportunity,
The Administrative Team of Head Start
Jen Hering, Kary Phelps, Sherry Spencer, Kennilyn Hickory

Governance and Administration

Board of Education

- Barbara A. Wells.....President
Jess Gathing Jr.....Vice President
Angela Shea.....Secretary
Mary L. Archie.....Member
Christopher Bohlen.....Member
Calvin Works.....Member
Darrell Williams.....Member

Policy Council

Parents - 51% Community - 49%

- Courtney Day Angela Shea
Tolulope Adeyemi Cindy Luzeniecki
Cristina Lopez Julie Waskosky
Ursala Williams Brittany Roth
Adam Phillips Laura Sztuba
Eleisha Black Susanna Ellexson
Jesslyn Radke

Central Administration

- Dr. Genera Walters.....Superintendent
Robert Grossi.....Assistant Superintendent of Business Services
Dr. Kathleen O'Connor.....Assistant Superintendent of Human Resources
Felice Hybert.....Assistant Superintendent of Curriculum & Instruction

## Mission and Vision Statement

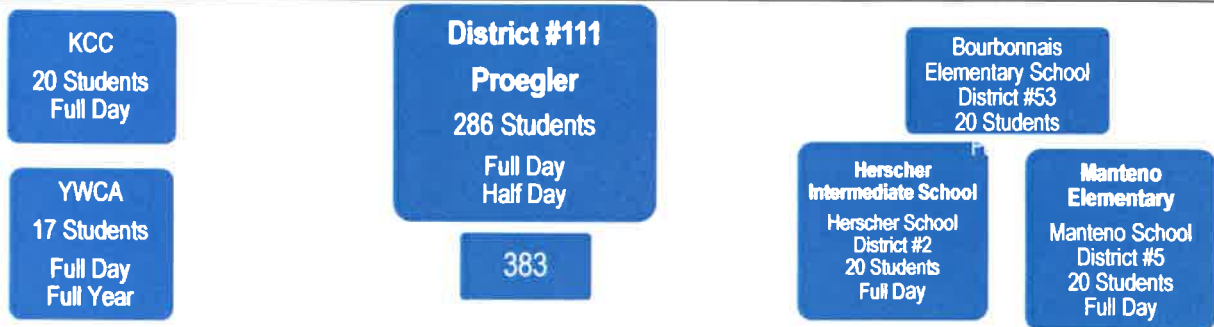
### Mission Statement:

Kankakee School District 111 will celebrate the unique diversity our students possess while providing visionary educational opportunities.

### Vision Statement:

Kankakee School District 111 will be recognized as being progressive, innovative, and creative. We work together to build ONE community with strong partnerships. We are ONE district committed to increasing student achievement. We have ONE vision of producing globally productive citizens. We do this for the diverse needs of ALL children.

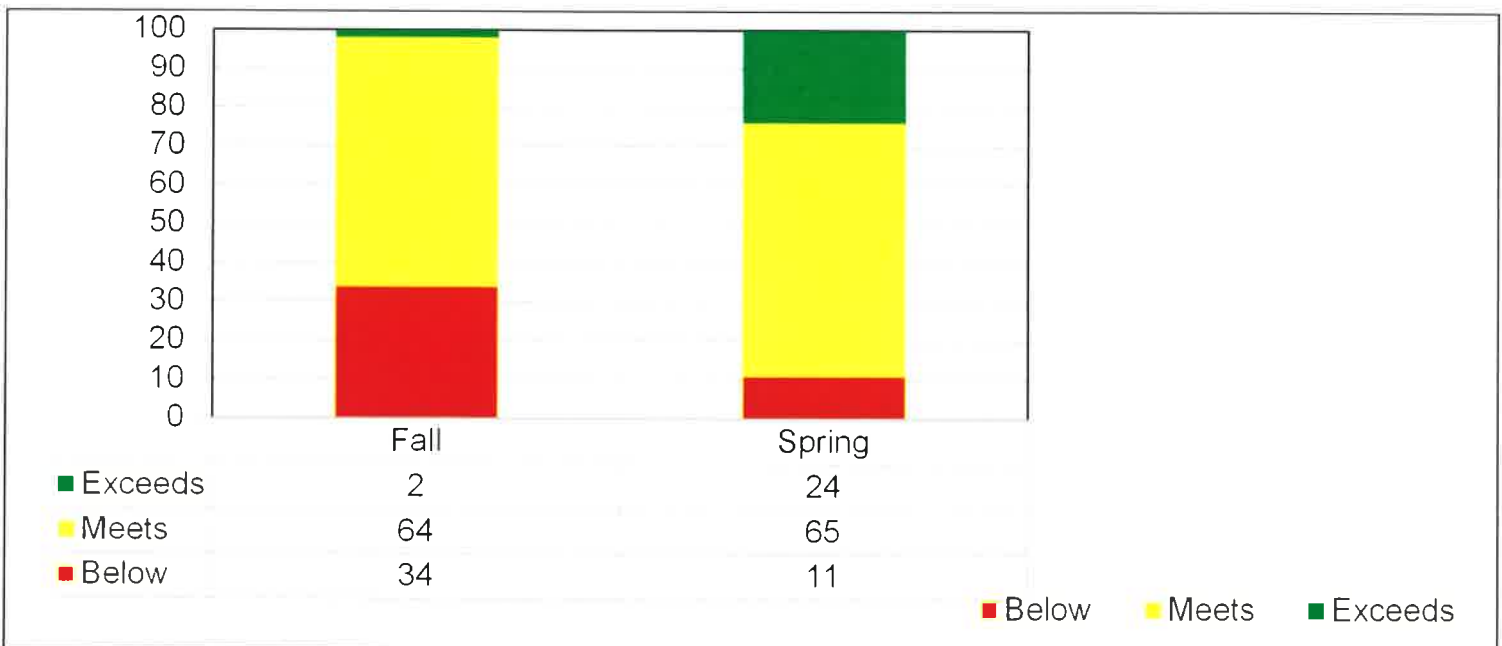
## Classroom Locations/Options



## Kindergarten Readiness

This assessment data was gathered through two different assessment tools, Teaching Strategies Gold and AIM. The assessment chart illustrates the overall social / emotional, physical, language, cognitive, literacy, and mathematics skills of our students at the end of the first assessment period in October and at the end of the final assessment period in May. KSD 111 Head Start continues it's history of providing excellent educational opportunities as evidenced by 89% of our students meeting or exceeding the end of year goals.

### 2018-2019 Assessment Data



## CLASS

### Head Start CLASS Information

In 2018, 462 Head Start grantees across the country received CLASS® reviews. The CLASS® tool has 10 dimensions of teacher-child interactions rated on a 7-point scale, from low to high. The 10 CLASS® dimensions are organized into three domains: Emotional Support, Classroom Organization, and Instructional Support.

- **Emotional Support** assesses the degree to which teachers establish and promote a positive climate in their classroom through their everyday interactions.
- **Classroom Organization** assesses classroom routines and procedures related to the organization and management of children's behavior, time, and attention in the classroom.
- **Instructional Support** assesses the ways in which teachers implement the curriculum to effectively promote cognitive and language development.

The chart below features our 2014 Federal Review scores, our 2018 Federal Review scores, and our current in house CLASS scores. We were pleased to learn that our Emotional Support scores and our Classroom Organization scores were just 1 to 2 tenths away from the highest 10% nationally during last year's review. However, our Instructional Support scores were below our expectations.

There was a major change in the Federal CLASS observations from 2014 to 2018. In 2014, the observers focused primarily on the teacher. In 2018, the observers were scoring their observations based upon all classroom staff - teacher and teacher assistant. Some of the changes that we have made to improve our own scores include: 5 CLASS observers which allows for more observations and feedback, co-observer's during CLASS observations to ensure inter-reliability, numerous CLASS trainings throughout the year beginning as early as August pre-service for all Head Start staff, and individual coaching to some of our newest employees - teachers and assistants.

	2014 Lowest 10% scores (nationally)	Proegler's 2014 Federal Review Scores	2014 Highest 10% scores (nationally)	2018 Lowest 10% scores (nationally)	Proegler's 2018 Federal Review Scores	2018 Highest 10% scores (nationally)	2018- 2019 CLASS scores
Emotional Support	5.72	6.13	6.50	5.66	6.25	6.45	5.99
Classroom Organization	5.36	6.45	6.35	5.28	6.19	6.28	5.61
Instructional Support	2.20	3.24	3.65	2.31	2.70	3.71	3.76

## Federal Review

From April 30<sup>th</sup> through May 4<sup>th</sup>, 2018, the Administration for Children and Families (ACF) conducted a Focus Area Two Monitoring Review of the Kankakee School District 111 Head Start program.

Based on the information gathered during this review, our Head Start program was found to have met requirements of all applicable Head Start Program Performance Standards, laws, regulations, and policy requirements.

# Family & Community Engagement

## Parent Trainings

Child Safety	Car Seat Information
Pedestrian Safety	Governance
How to Read to your Child Everyday	Cooking Fun for Kids
Childhood Development	Self-Assessment
Dental Health	Sexual Assault/Child Abuse
Nutrition and Exercise	Things to do while you're Waiting
Ready Rosie	Transition to Kindergarten
	Volunteer Guidelines
	STEAM in the Classroom

## Parent Engagement Activities

Fall/Spring Parent/Teacher Conferences	Family Feast
Family Reading Night	Reading Incentive Program
BooHoo Yahoo Breakfast	Home Visits
Policy Council	Family Stability & School Readiness
Grandparents Day	Family Goal Setting
Octoberfest	Gingerbread Houses
Little Elves Workshop	Donuts with Dads
	Muffins with Moms

## Health Services Advisory Committee Members

Marianne Heinzl ..... Retired Pediatric RN

Megan Walsh ..... U of I Extension, Director

Deloris Walker.....U of I Extension, SNAP-Ed

Annette Tyler ..... District #111 Health Center Director

Beth Proctor ..... District #111 Food Service Director

Dawn Botensten..... District #111 Nutritionist

Rebecca Parks..... Riverside Behavioral Services  
School Liaison

Laura Sztuba.....Kankakee Country Health Dept.

Courtney Day.....Parent

## Success by Six

Since its inception in 2008, Head Start has been a contributing member of the Success by Six™ Regional Partnership for Early Childhood Development - an initiative of the United Way of Kankakee County and the Community Foundation of Kankakee River Valley. Parent Cafes, Kindergarten Boot Camps, Early Childhood Conferences, and, most recently, a partnership with the Erikson Institute's *Early Development Instrument*. The EDI is a teacher completed instrument which measures children's development through a population measure and 103 questions completed by kindergarten teachers in five domains to move the focus to the entire community.

## 23 Community Partnerships

Areseneau Optical	Iroquois – Kankakee Regional Office of Education	KCC Adult Literacy Initiative Volunteers Exp.
Bradley Dental	Kankakee City Fire Department	KC-CASA – Sexual Assault Center
Child Care Resource & Referral	Kankakee County Community Services, Inc.	Local Interagency Council/Child & Family Connections
DCFS	Kankakee County Health Department	Make A Difference Program (Bradley 0-5)
First Taste – Kankakee (Birth to three)	Kankakee County Housing Authority	OPDS, Inc.
Foster Grandparent Program	Kankakee County Training Center	Pledge for Life
Helen Wheeler Mental Health Center	Kankakee Public Library Youth Services	River Valley Migrant & Seasonal Head Start
IDHS	Kankakee School District Junior High Clinic	

## Memorandums of Understanding

Bourbonnais Community Unit School District #53

Bradley Community Unit School District #61

Herscher Community Unit School District #2

Kankakee School District 111

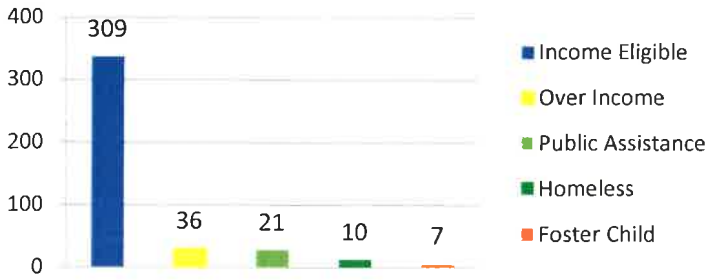
Manteno Community School District #5

Kankakee Community College

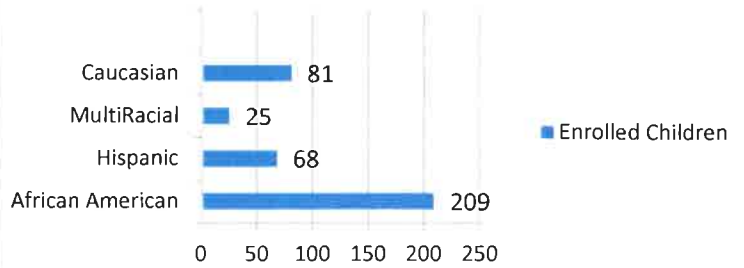
Young Women's Christian Association

## Head Start Student Information

### Family Eligibility



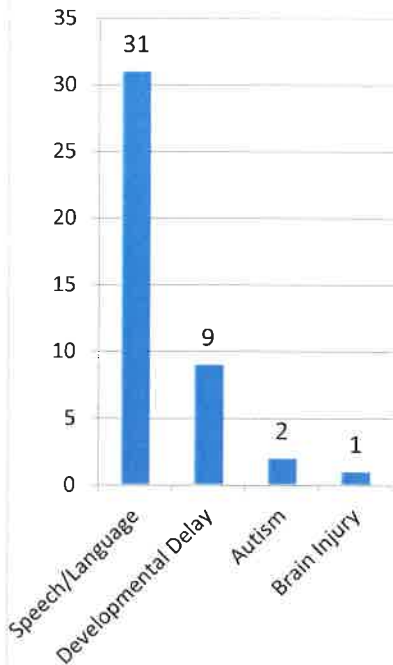
### Demographics



### Disability Services

At least 10% of children enrolled in the program must have a disability documented through an IEP. This table demonstrates the type disabilities present in the current year.

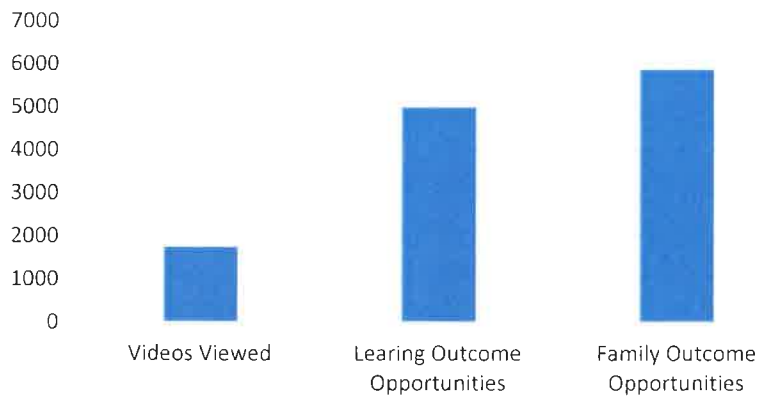
### Students with Disabilities



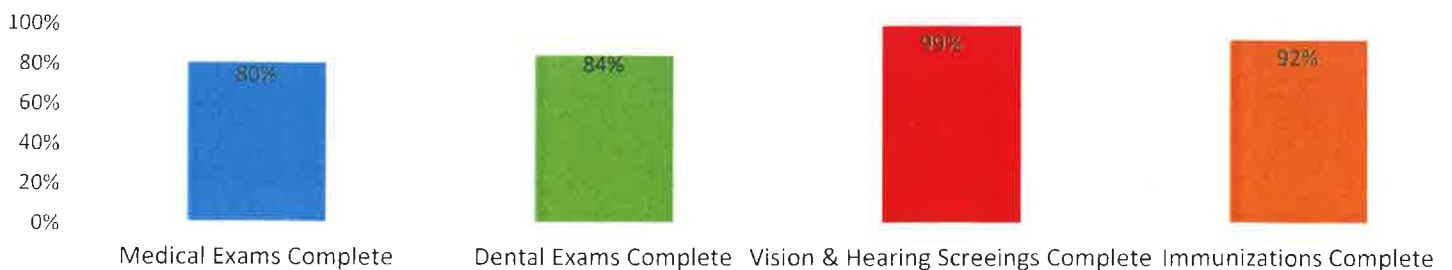
### ReadyRosie

This year we began utilizing ReadyRosie as our evidence-informed and research-based family engagement and early learning tool. The goal was to provide delivery of a rich parenting content at home so families can build a strong home learning practice. This two-fold approach deepens the learning experience, builds capacity, and inspires an ongoing commitment to family learning. ReadyRosie is a series of weekly videos that last approximately 2 minutes and allow parents to learn what is happening in the classroom, discover activities and games related to classroom learning and have fun, meaningful interactions with their child. This first year was very successful with 251 registered users, watching 1753 videos. The videos covered learning opportunities in math, social emotional, language and literacy, health and well-being and family outcomes related to the Parent, Family, and Community Engagement Framework (PFCE).

### Ready Rosie

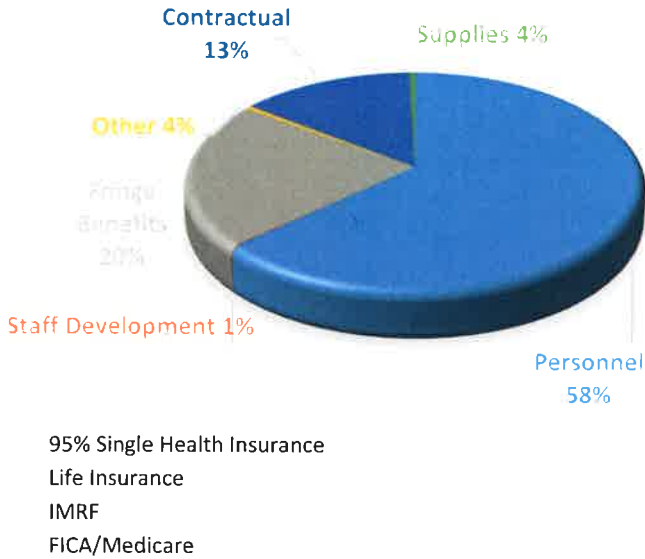


### Child Health



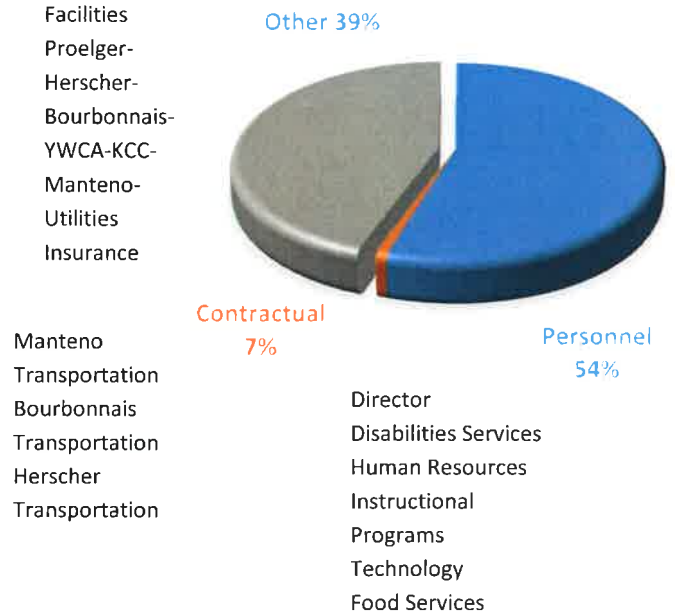
## Finance

### Federal



**\$2,880,225**

### Non-Federal



**\$720,056**

**Total \$3,600,281**

## Head Start Staff

4 Administrators	16 Teachers
3 Administrative Assistants	16 Teacher Assistants
5 Family Support Specialist	5 Education Support
2 Custodians	1 Curriculum and Instruction Coach
	1 Mental Health Specialist

## Financial Audit

Smith, Koelling, Dykstra & Ohm conducted the annual financial audit for the year ending June 30, 2018. Kankakee School District Head Start is in compliance with the requirements described in the Office of Management Budget (OMB) Compliance Supplement. Information was presented as public information on November 12, 2018.