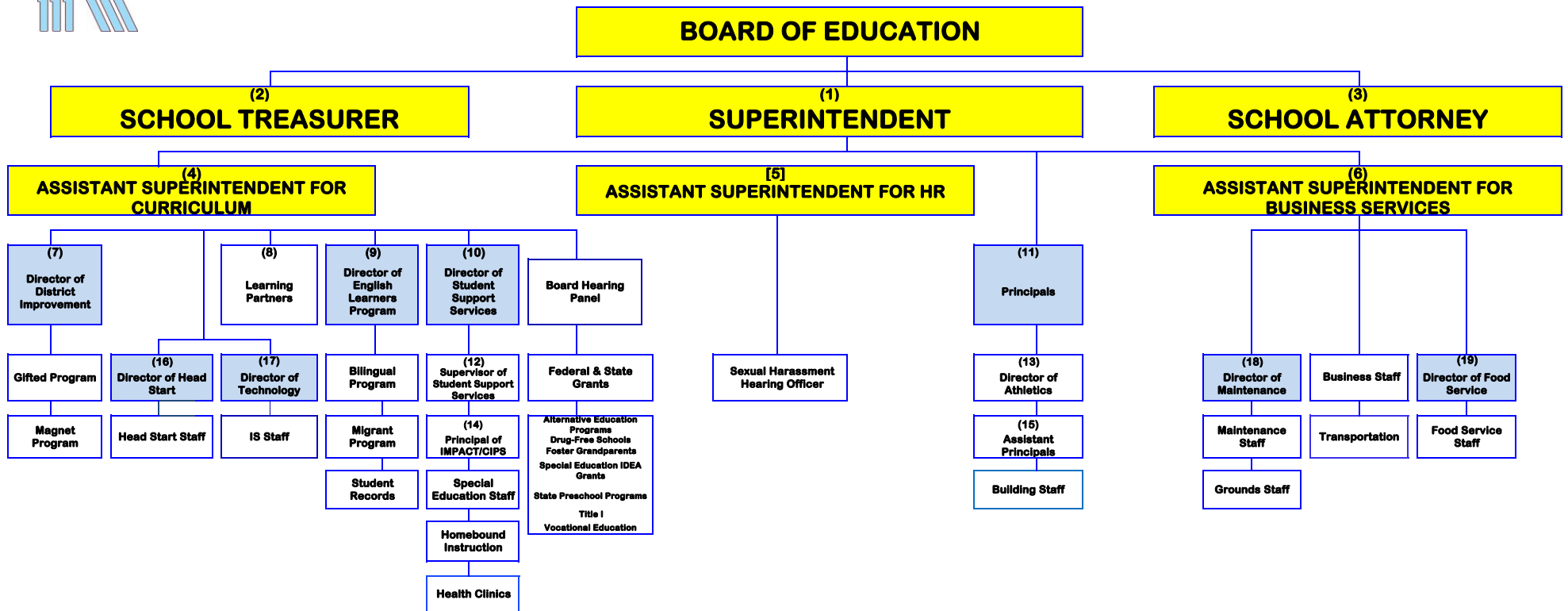


STAFF ORGANIZATION CHART 2018-2019 SCHOOL YEAR



- (1) **Superintendent** - Dr. Geneva A. Walters
- (2) **School Treasurer** - Robert Grossi
- (3) **School Attorney** - Franczek Radelet
- (4) **Assistant Superintendent** - Felice Hybert
- (5) **Assistant Superintendent** - Dr. Kathleen O'Connor
- (6) **Assistant Superintendent** - Robert Grossi
- (7) **Director** - Jennifer Way
- (8) **Learning Partners** - Ferris, Grant, Grzelak, Latham
- (9) **Director** - Ana Kasal
- (10) **Director** - Nate McCue

- (11) **Principals**
Edison - Cheryl O'Leary
Lincoln C.C./Montessori - Chuck Hensley
Mark Twain - Ericka Garza
Steuben - Ana Kasal
Taft - Terrence Lee
Kennedy - Cynthia Veronda
King - Shemeka Fountain
KJHS - Dr. Larry Gray
KHS - George Harris
- (12) **Supervisor** - Erin Thorne
- (13) **Director** - Ronnie Wilcox
- (14) **IMPACT/CIPS Principal** - Leah Carter

- (15) **Assistant Principals**
Kennedy - Barnetta Harris
King - Bonnie Tolliver
KJHS - Fiona Walz
KJHS - Keith White
KHS - Adrienne LaCour
KHS - Tammy Williams
KHS - Edith Bender-Petty
KHS - Robert de Oliveira
- (16) **Director** - Jennifer Hering
- (17) **Director** - Dan Dannenberg
- (18) **Director** - Jim Kaplanes
- (19) **Director** - Elizabeth Proctor

- District-Wide Responsibilities**
- 504 Hearing Officer - Nate McCue
 - Bilingual Program - Ana Kasal
 - Black History Program Coordinator -
 - Blood Borne Pathogens - Business Office
 - Board Hearing Panel - Felice Hybert
 - Discipline Committee (Code of Conduct) - Felice Hybert
 - Homeless Coordinator - Barnetta Harris
 - K-12 Fine Arts Coordinator - Charles Hensley
 - Registration - Business Office & Technology Department
 - Safety Program - Business Office
 - Sexual Harassment Hearing Officers - Robert de Oliveira & Barnetta Harris
 - Summer Migrant Program - Ana Kasal
 - Secondary School Alignment (6-12) - Dr. Larry Gray